

StealthNet

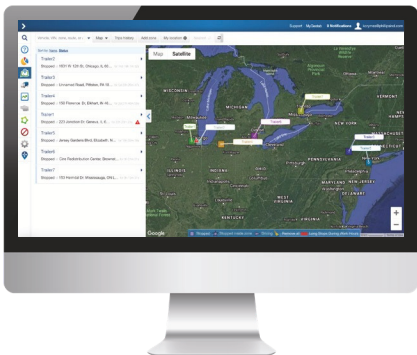
4G LTE Asset Tracking Gateway

Installs in less than 10 minutes!



Phillips Connect's best-in-class hardware is now integrated into MyGeotab!

Ideal for trailers and chassis. StealthNet is an easily expandable tracking solution designed for the toughest trucking conditions.



Manage your assets in MyGeotab



StealthNet Gateway



StealthNet Installed on Chassis

SOLUTION HIGHLIGHTS

Manage and view your trailers and chassis in the Geotab ecosystem

Real-time visibility and simple geofencing

Automated alerts configurable in MyGeotab

Unlimited Bluetooth Connectivity - Easily add sensors as they become available

6 months of reporting (when battery is fully charged and asset is stationary)

Flawless operation in the harshest temperatures

2 minute reporting when in motion

2 reports per day when parked

POWERFUL COST SAVING TOOLS

Do more with fewer trailers

Optimize trailer pool management

Automate yard checks

Covert installations help eliminate trailer theft and cargo loss

Improve driver satisfaction

Manage detention billing



Theft Recovery



GPS, Geofencing, Route Tracking



Unlimited Bluetooth Connectivity



10 Minute Installation



StealthNet



CELLULAR TECHNOLOGY

LTE Cat 1

Integrated high sensitivity antenna

Auto register to packet network

GPS FUNCTIONALITY

Channels: 56

Tracking Sensitivity: -162 dBm

Acquisition Sensitivity: -148 dBm

Location Accuracy: 2.5 CEP

BLUETOOTH

Low Energy (BLE)

Version 4.2

POWER MANAGEMENT

Battery Type: 4 x 18650 Li-ion

Battery Capacity: 36Wh (10.6 Ah)

Expected Battery Life: 10 Years

Deep Sleep: < 400uW

Energy Per Report: < 8mWh

Tracking: < 8mW

ELECTRICAL

Operating Voltage: 10V – 32VDC

Power management modes: Full power, network off, listening mode, deep sleep

ENVIRONMENTAL

Operation Temperature: -22°F to 167°F (-30°C to 75°C)

Storage Temperature: -40°F to 167°F (-40°C to 75°C)

Operation Humidity: 20% to 90% (non-condensing)

Storage Humidity: 10% to 95% (non-condensing)

Designed to meet SAE J1455, SAE 113, and J121

PHYSICAL

Dimensions: 6.46in x 3.14in x 1.54in

(164mm x 80mm x 39mm)

Weight: .93lbs (420g)

Internal Cellular and GPS Antenna

APPROVALS

FCC 47 CFR Part 15, Part 22, and Part 24