

EZTrac™

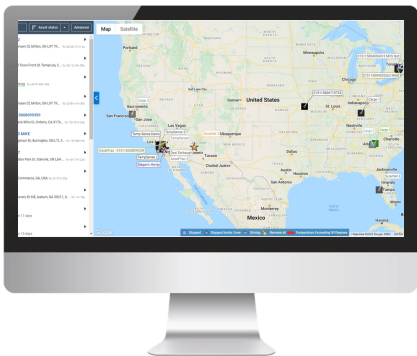
2 Minute Installation with Plug-and-Play Design

EZ Trailer Tracking Like No Other!



Phillips Connect's best-in-class hardware is now integrated into MyGeotab!

Ideal for trailers and chassis. EZTrac™ is a 4G LTE tracking solution designed for the toughest trucking conditions.



Manage your trailers and chassis in MyGeotab

SOLUTION HIGHLIGHTS

- Manage and view your trailers and chassis in the Geotab ecosystem
- Real-time visibility and simple geofencing
- Automated alerts configurable in MyGeotab
- Flawless operation in the harshest temperatures (-4°F to 140°F)
- Plug-and-Play Design - Plugs into standard ABS harness; no splicing or rewiring required
- 2-minute reporting when in motion

POWERFUL COST SAVING TOOLS

- Do more with fewer trailers
- Optimize trailer pool management
- Automate yard checks
- Helps eliminate trailer theft and cargo loss
- Improve driver satisfaction
- Manage detention billing



EZTrac™



EZTrac™ Installed on Trailer



Theft Recovery



GPS, Geofencing, Route Tracking



Waterproof



2 Minute Installation



EZTrac™



CELLULAR TECHNOLOGY

LTE Cat 1
HSPA Fallback Bands 2, 5 (TMO)
Integrated high sensitivity antenna
Auto register to packet network

GPS FUNCTIONALITY

Channels: 56
Tracking Sensitivity: -162 dBm
Acquisition Sensitivity: -148 dBm
Location Accuracy: 2.5 CEP

POWER MANAGEMENT

Operating Voltage: 6V-28V
Voltage Over-protected TVS 36V and
Fused Power Consumption:
Sleep: < 60mW
Tracking: < 400mW

INTERFACE CONNECTOR (DEVICE TO HARNESS)

Power (ABS/Brakes) and Ground

ENVIRONMENTAL

Operation Temperature: -4°F to 140°F (-20°C to 60°C)
Storage Temperature: -40°F to 185°F (-40°C to 85°C)
Operation Humidity: 20% to 90% (non-condensing)
Storage Humidity: 10% to 95% (non-condensing)

PHYSICAL

IP67 Enclosure
Dimensions: 3.58in x 1.55in x .62in (91mm x 39.4mm x 15.7mm)
Weight: .56lbs (255g)

APPROVALS

FCC 47 CFR Part 15, Part 22, and Part 24; IC
RoHS2 and WEEE Certification
PTCRB Certification

