

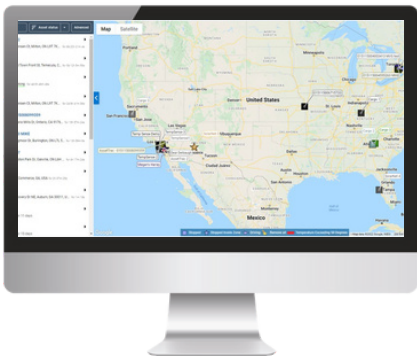
# AssetTrac<sup>TM</sup> on ABS



Cellular tracking with integrated power source.

## Phillips Connect's best-in-class hardware is now integrated into MyGeotab!

Ideal for trailers and chassis. AssetTrac<sup>TM</sup> on ABS is a 4G LTE tracking solution designed for the toughest trucking conditions.



Manage your assets in MyGeotab



## SOLUTION HIGHLIGHTS

Manage and view your assets in the Geotab ecosystem

Complete visibility and simple geofencing

Automated alerts configurable in MyGeotab

7+ years of operation.

Backup battery with 5,000 event reports

Customizable behavior

Flawless operation in the harshest temperatures

2-minute reporting when connected to power

2 reports per day when parked

## POWERFUL COST SAVING TOOLS

Do more with fewer assets

Covert installations help eliminate asset theft and loss



Theft  
Recovery



GPS, Geofencing,  
Route Tracking



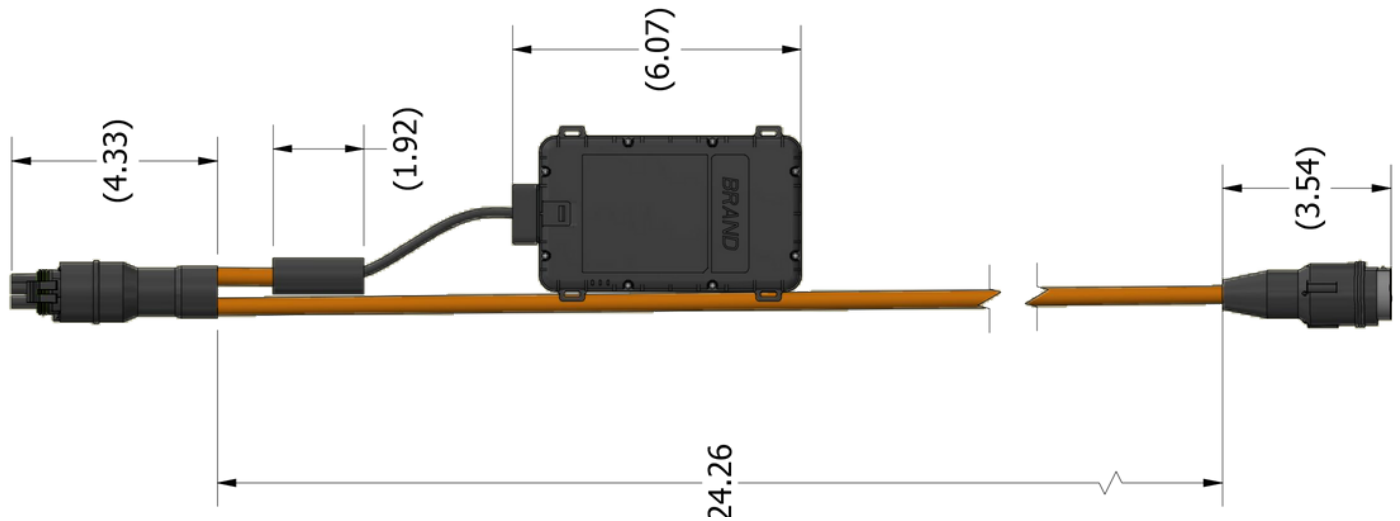
Waterproof



2 Minute  
Installation



# AssetTrac™ on ABS



## CELLULAR TECHNOLOGY

LTE Cat 1 (bands 2, 4, 12)  
HSPA Fallback Bands 2, 5  
Integrated high sensitivity antenna  
Auto register to packet network

## GPS FUNCTIONALITY

Channels: 56  
Tracking Sensitivity: -162 dBm  
Acquisition Sensitivity: -148 dBm  
Location Accuracy: 2.5 CEP

## POWER MANAGEMENT

Battery Capacity: 29Wh  
Battery Type: 3 x AA Li-SOCI2  
Power Management Modes:  
Continuous Tracking  
Listening Mode  
Deep Sleep  
Power Consumption:  
Deep Sleep: < 200uW  
Energy Per Report: < 4mWh

## ENVIRONMENTAL

Operation Temperature: -22°F to 158°F (-30°C to 75°C)  
Storage Temperature: -40°F to 113°F (-40°C to 45°C)  
Operation Humidity: 20% to 90% (non-condensing)  
Storage Humidity: 10% to 95% (non-condensing)

## PHYSICAL

IP67 Enclosure  
Dimensions: 5.51in x 3.7in x .79in  
(140mm x 94mm x 20mm)  
Weight: 0.51lbs (231g)  
Internal Cellular and GPS Antenna  
Optional external 12V power adapter available

## APPROVALS

FCC 47 CFR Part 15, Part 22, and Part 24  
PTCRB Certification

## INTERFACE CONNECTOR (DEVICE TO HARNESS)

Power (ABS/Brakes) and Ground